



**CATALOGUE** OF HOT AIR FIREPLACE INSERTS

# BEF HOME

fire for your heart

BEF THERM	2
BEF FEEL	16
BEF DOUBLE FEEL	24
BEF TWIN	28
BEF TWIN II.	30



**CZ** | Kotvrdovice 277  
679 07 Kotvrdovice  
Czech Republic

tel.: +420 516 428 240  
e-mail: [info@bef.cz](mailto:info@bef.cz)  
IČ: 25 52 46 82  
DIČ: CZ 25 52 46 82

**SK** | Turá Lúka 97  
907 03 Myjava  
Slovakia

tel.: +421 346 216 790  
e-mail: [info@bef.sk](mailto:info@bef.sk)

**PL** | Bąków ul. Główna 4a  
43-246 Strumień  
Poland

tel.: +48 530 712 534  
tel.: +48 530 712 624  
e-mail: [info@befpolska.pl](mailto:info@befpolska.pl)

**FR** | 1 Place de l'Homme de Fer  
67 000 Strasbourg  
France

tél.: 00 33 672 383 113  
e-mail: [info@foyers-bef.fr](mailto:info@foyers-bef.fr)

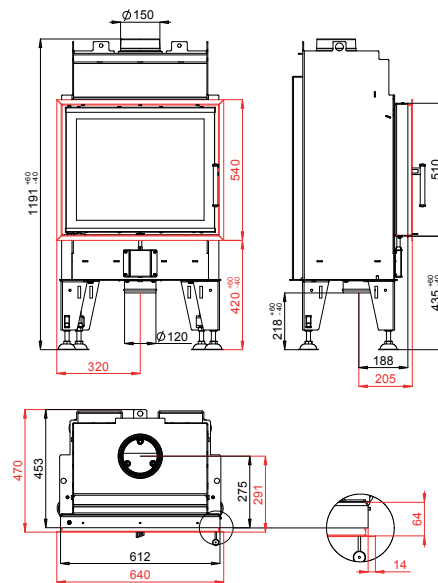


# BEF THERM 6

BlmSchV  
Stufe 2

15a  
B - VG

ČSN EN  
13229

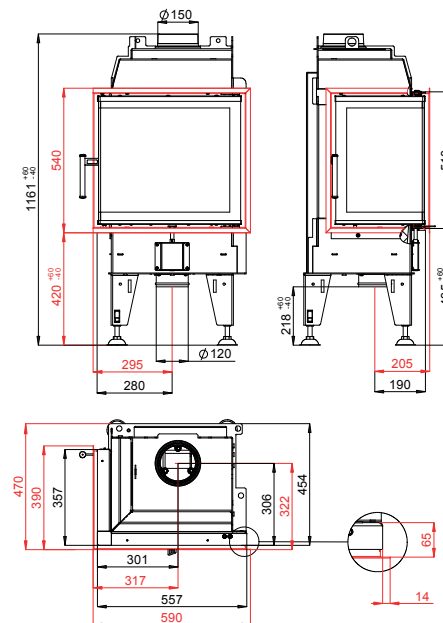


# BEF THERM 6 CL/CP

BlmSchV  
Stufe 2

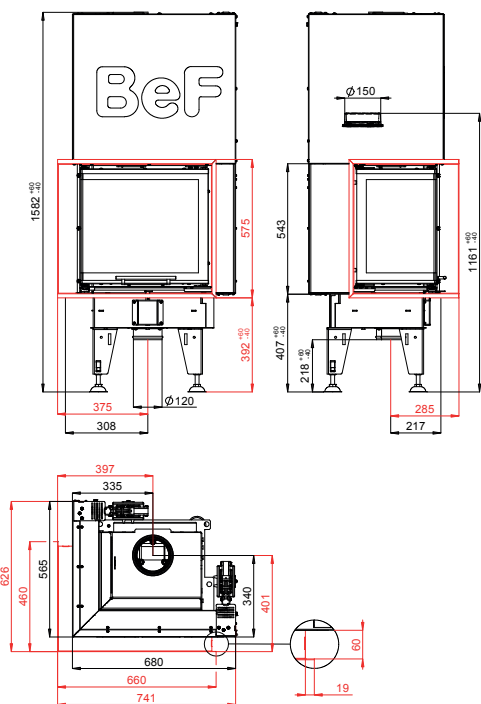
15a  
B - VG

ČSN EN  
13229





## BEF THERM V 6 CL/CP



BImSchV  
Stufe 2

15a  
B - VG

ČSN EN  
13229

eco  
design



- 4 - 7 kW
- 82 %
- 150 mm
- 250 mm
- 395 x 295 mm
- 530 x 330 x 468 mm

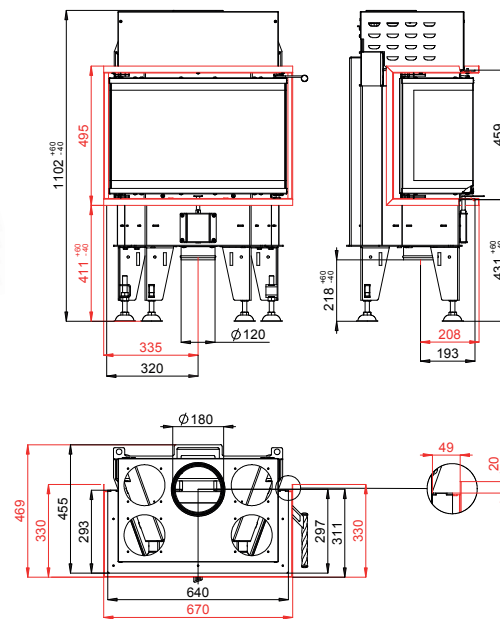
- 12 Pa
- 1,85 kg/h
- 262 °C
- 4,6 g/s
- 0,0873 %
- 19 mg/Nm<sup>3</sup>
- 236 kg

# BEF THERM 6 C

BlmSchV  
Stufe 2

15a  
B - VG

ČSN EN  
13229



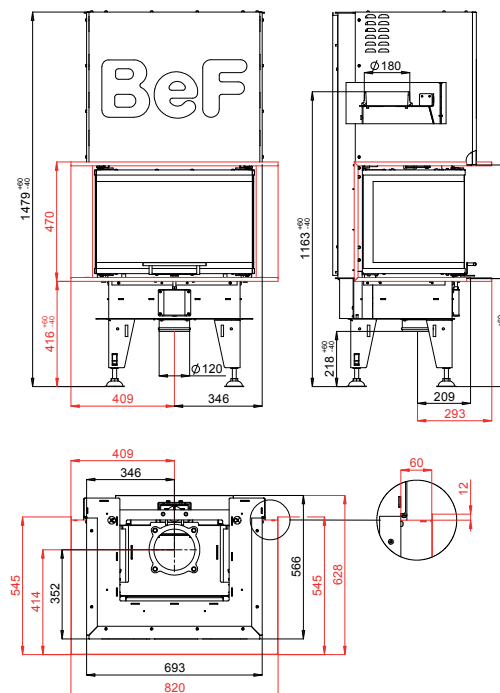
- 4 - 7 kW
- 82 %
- 180 mm
- 250 mm
- 465 x 295 mm
- 624 x 250 x 400 mm
- 12 Pa
- 1,85 kg/h
- 262 °C
- 4,6 g/s
- 0,0873 %
- 19 mg/Nm<sup>3</sup>
- 130 kg

# BEF THERM V 6 C

BlmSchV  
Stufe 2

15a  
B - VG

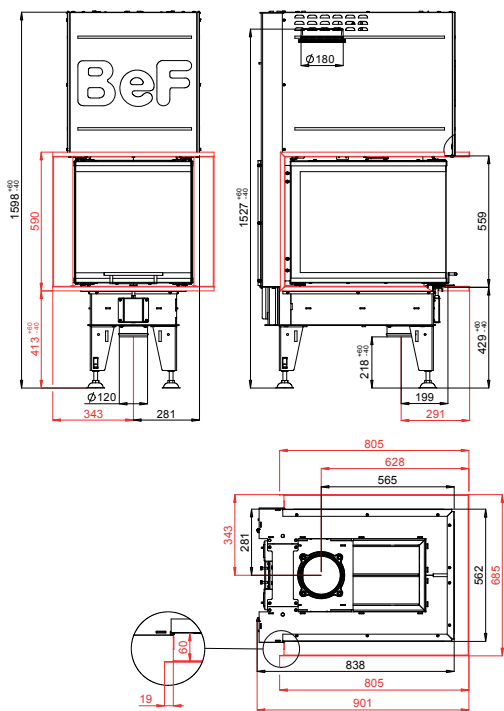
ČSN EN  
13229



- 4 - 7 kW
- 82 %
- 180 mm
- 330 mm
- 400 x 251 mm
- 624 x 400 x 400 mm
- 12 Pa
- 1,85 kg/h
- 262 °C
- 4,6 g/s
- 0,0873 %
- 19 mg/Nm<sup>3</sup>
- 227 kg



## BEF THERM V 6 U



BImSchV  
Stufe 2

15a  
B - VG

ČSN EN  
13229

eco  
design



4 - 7 kW   
 82 %   
 180 mm   
 400 mm   
 282 x 491 mm   
 500 x 660 x 510 mm

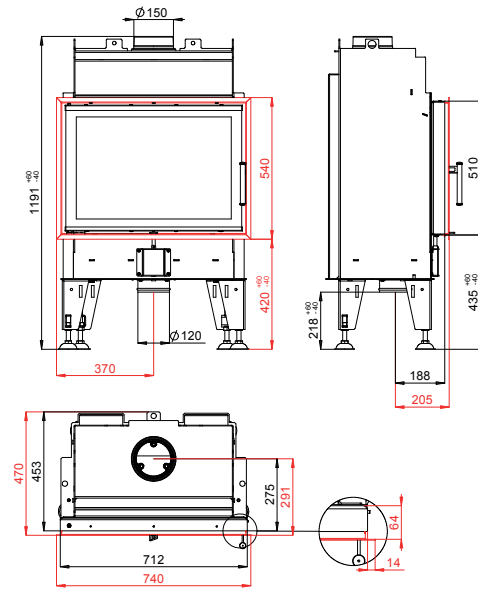
12 Pa   
 1,85 kg/h   
 262 °C   
 4,6 g/s   
 0,0873 %   
 19 mg/Nm<sup>3</sup>   
 322 kg

# BEF THERM 7

BlmSchV  
Stufe 2

15a  
B-VG

ČSN EN  
13229

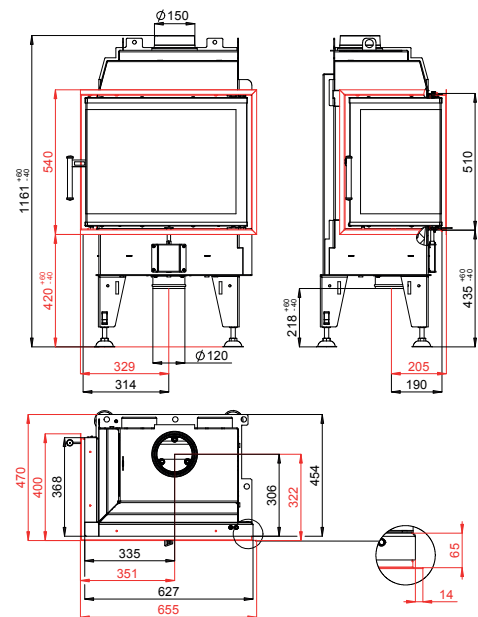


# BEF THERM 7 CL/CP

BlmSchV  
Stufe 2

15a  
B-VG

ČSN EN  
13229



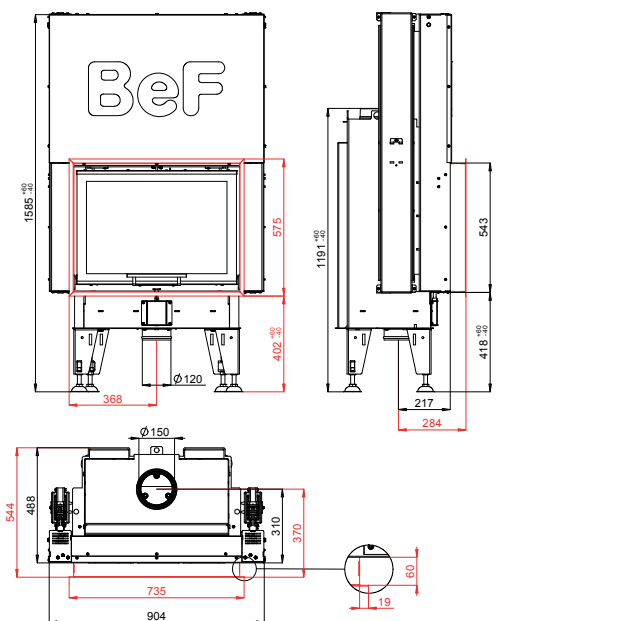


# BEF THERM V 7

BlmSchV  
Stufe 2

15a  
B - VG

ČSN EN  
13229

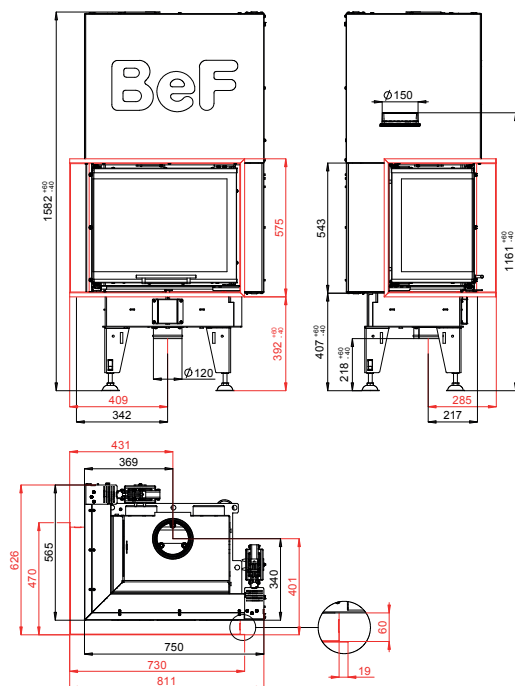


# BEF THERM V 7 CL/CP

BlmSchV  
Stufe 2

15a  
B - VG

ČSN EN  
13229

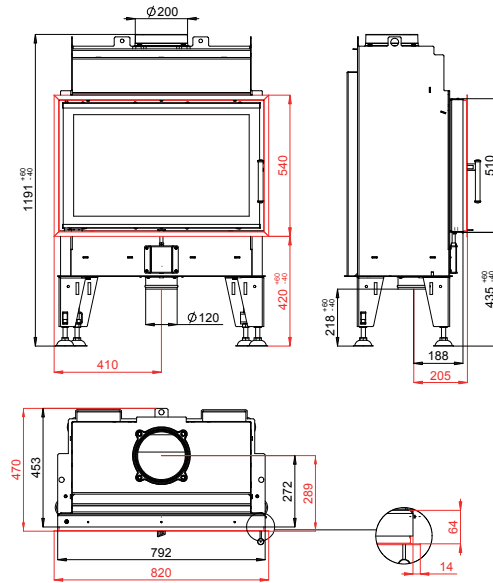


# BEF THERM 8

BImSchV  
Stufe 2

15a  
B - VG

ČSN EN  
13229

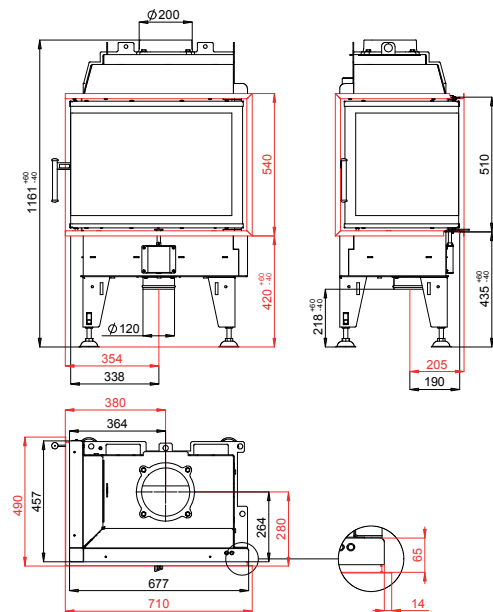


# BEF THERM 8 CL/CP

BImSchV  
Stufe 2

15a  
B - VG

ČSN EN  
13229



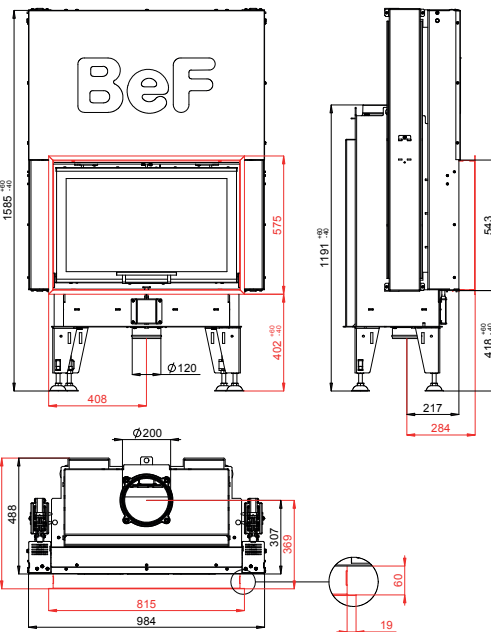


# BEF THERM V 8

BlmSchV  
Stufe 2

15a  
B-VG

ČSN EN  
13229

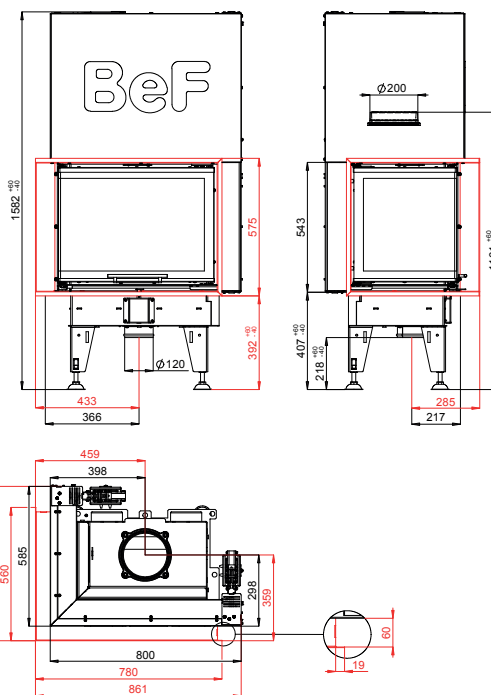


# BEF THERM V 8 CL/CP

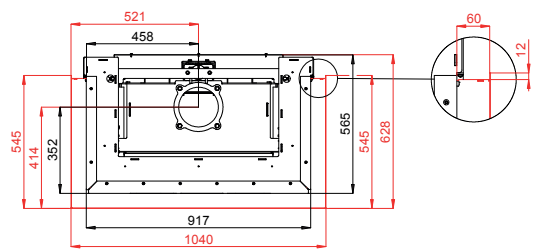
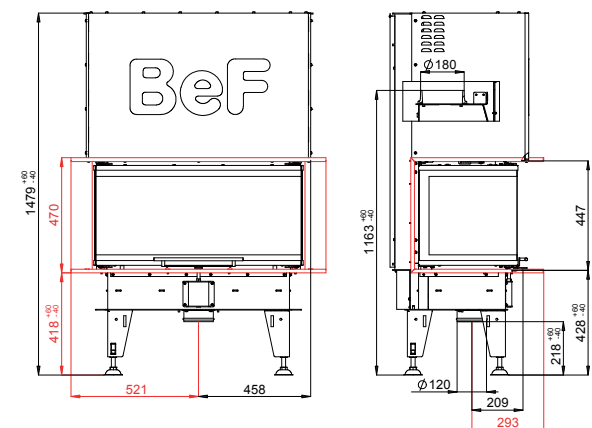
BlmSchV  
Stufe 2

15a  
B-VG

ČSN EN  
13229



# BEF THERM V 8 C



- 7 - 10 kW
- 84 %
- 180 mm
- 500 mm
- 621 x 251 mm
- 848 x 400 x 400 mm

- 12 Pa
- 2,7 kg/h
- 257 °C
- 6 g/s
- 0,0868 %
- 18 mg/Nm<sup>3</sup>
- 260 kg



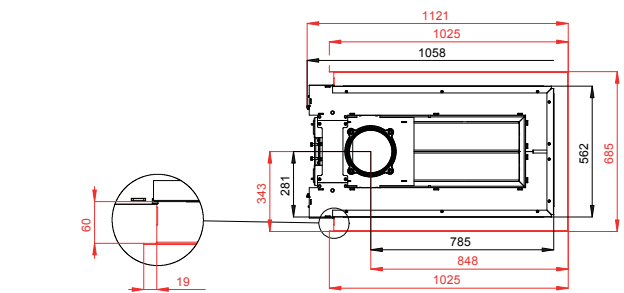
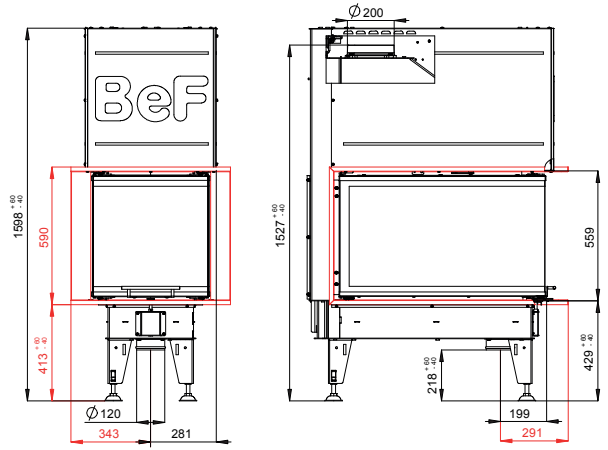
BlmSchV  
Stufe 2

15a  
B - VG

ČSN EN  
13229



# BEF THERM V 8 U



- 7 - 10 kW
- 84 %
- 200 mm
- 660 mm
- 282 x 711 mm
- 500 x 880 x 510 mm

- 12 Pa
- 2,7 kg/h
- 257 °C
- 6 g/s
- 0,0868 %
- 18 mg/Nm<sup>3</sup>
- 376 kg



BlmSchV  
Stufe 2

15a  
B - VG

ČSN EN  
13229

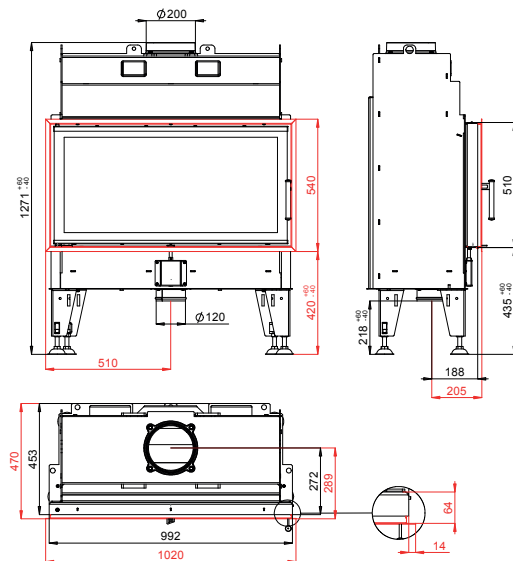


# BEF THERM 10

BlmSchV  
Stufe 2

15a  
B-VG

ČSN EN  
13229

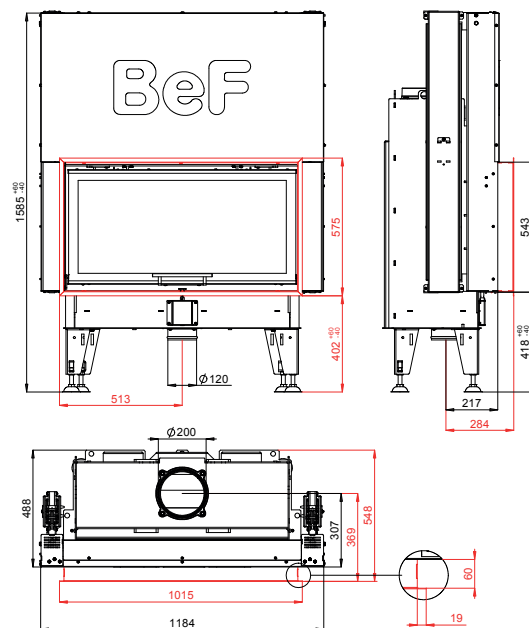


# BEF THERM V 10

BlmSchV  
Stufe 2

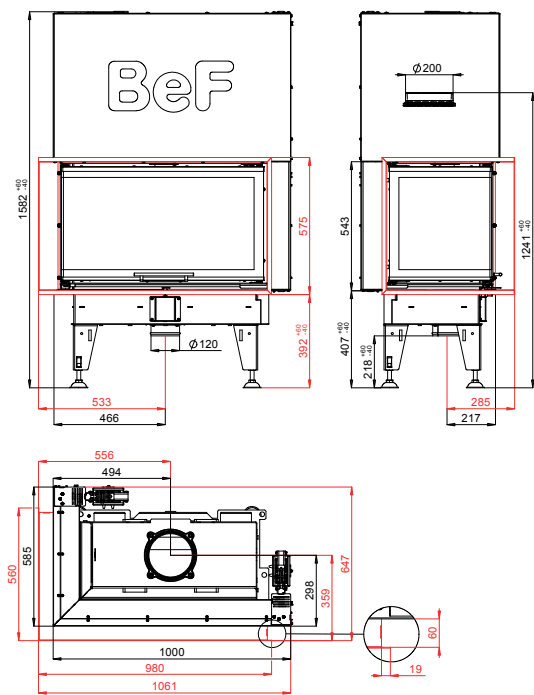
15a  
B-VG

ČSN EN  
13229





## BEF THERM V 10 CL/CP



BImSchV  
Stufe 2

15a  
B - VG

ČSN EN  
13229

eco  
design



 11 - 14 kW  
  84 %  
  200 mm  
  660 mm  
  715 x 295 mm  
  850 x 430 x 468 mm

 12 Pa  
  3,6 kg/h  
  235 °C  
  10,2 g/s  
  0,0877 %  
  11 mg/Nm<sup>3</sup>  
  287 kg

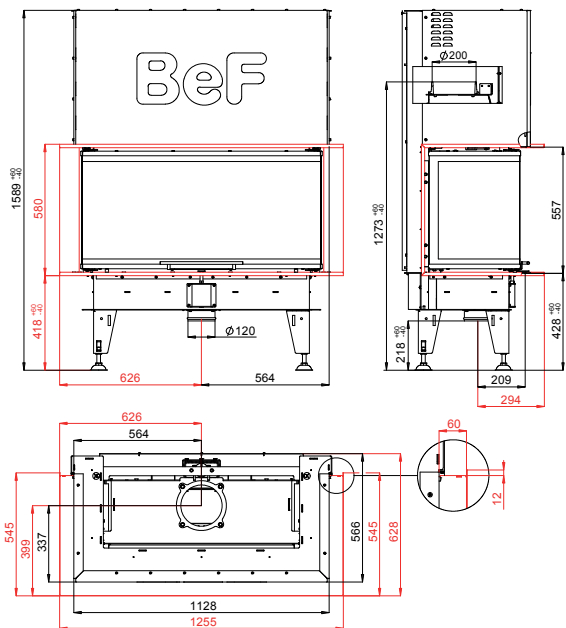
# BEF THERM V 10 C

BlmSchV  
Stufe 2

15a  
B-VG

ČSN EN  
13229

eco  
design



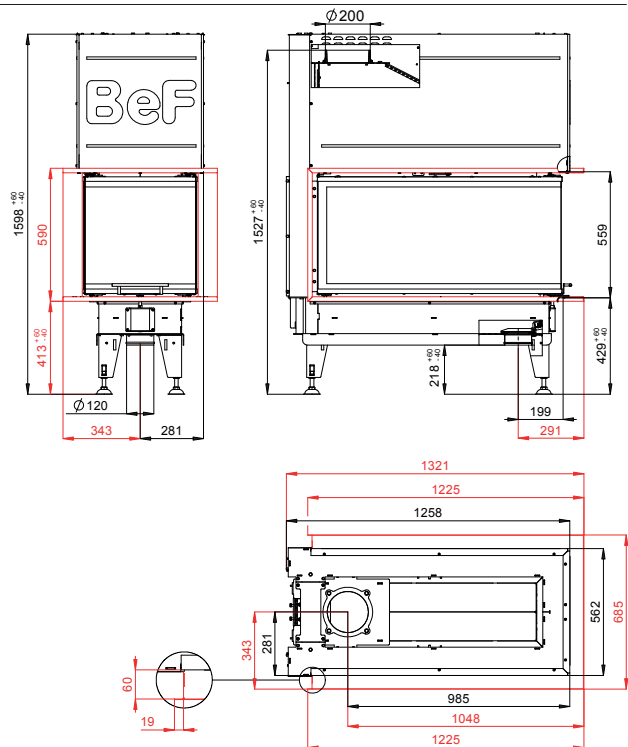
# BEF THERM V 10 U

BlmSchV  
Stufe 2

15a  
B-VG

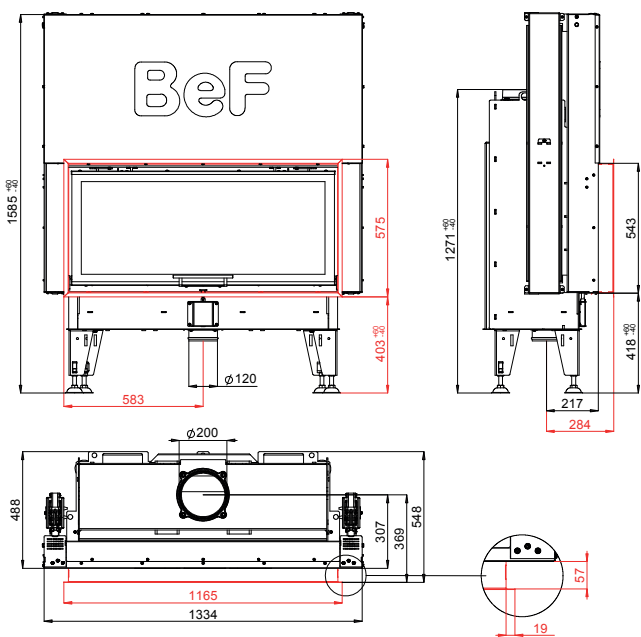
ČSN EN  
13229

eco  
design





# BEF THERM V 12



BlmSchV  
Stufe 2

15a  
B - VG

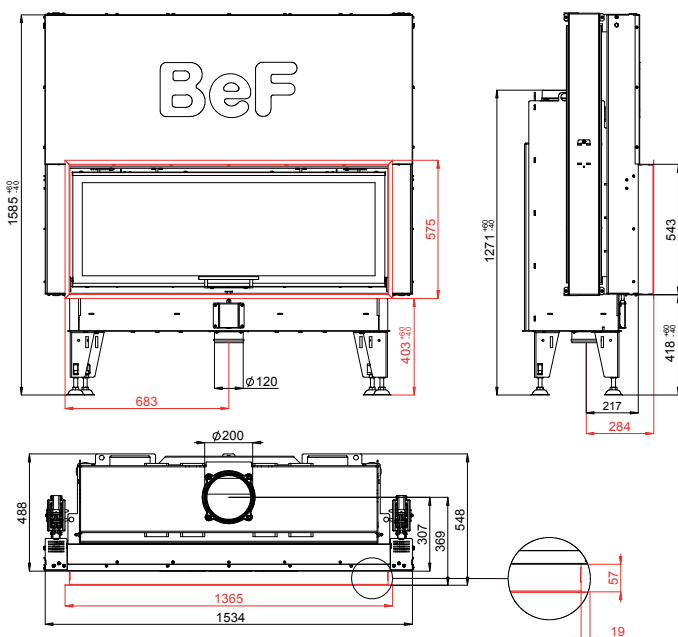
ČSN EN  
13229

eco  
design

- 11,5 - 14,5 kW
- 80 %
- 200 mm
- 800 mm
- 954 x 298 mm
- 1x 1100 x 468 mm

- 10 Pa
- 4 kg/h
- 256 °C
- 12 g/s
- 0,0898 %
- 30 mg/Nm<sup>3</sup>
- 354 kg

# BEF THERM V 14



BlmSchV  
Stufe 2

15a  
B - VG

ČSN EN  
13229

eco  
design

- 12 - 15 kW
- 82 %
- 200 mm
- 1000 mm
- 1154 x 298 mm
- 1x 1300 x 468 mm

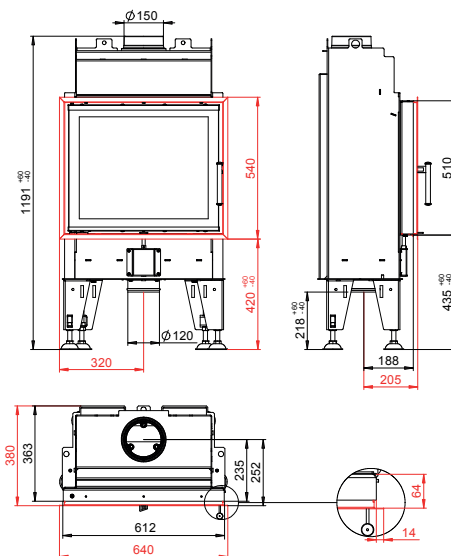
- 10 Pa
- 4 kg/h
- 262 °C
- 10,3 g/s
- 0,0985 %
- 26 mg/Nm<sup>3</sup>
- 406 kg

# BEF FEEL 6

BImSchV  
Stufe 2

15a  
B-VG

ČSN EN  
13229

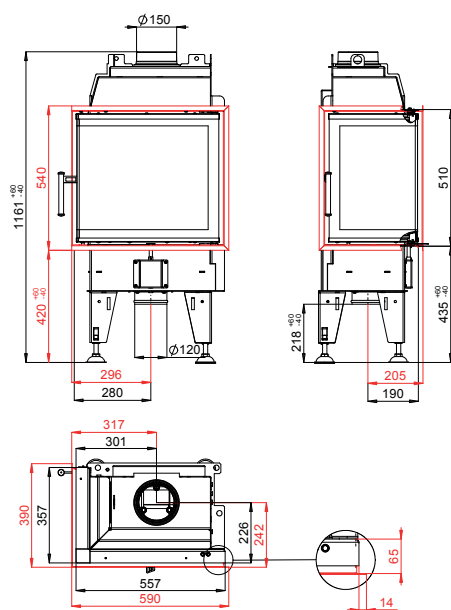


# BEF FEEL 6 CL/CP

BImSchV  
Stufe 2

15a  
B-VG

ČSN EN  
13229







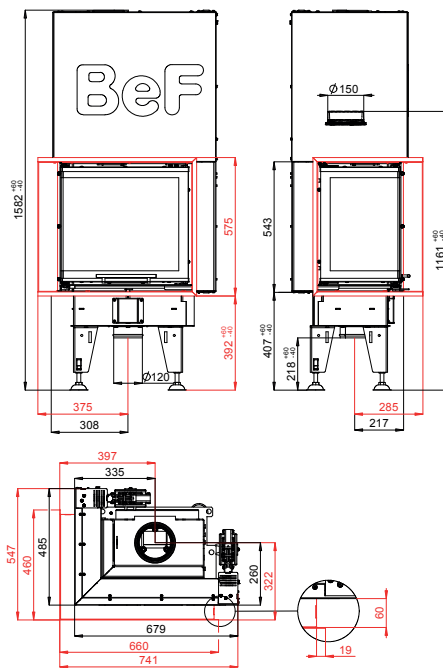
## BEF FEEL V 6 CL/CP

BlmSchV  
Stufe 2

15a  
B - VG

ČSN EN  
13229

eco  
design

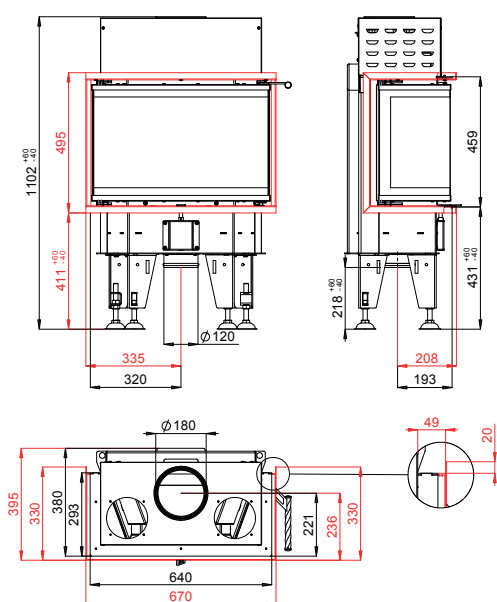


3 - 6 kW  
 84 %  
 150 mm  
 250 mm  
 395 x 215 mm  
 530 x 330 x 468 mm

12 Pa  
 1,53 kg/h  
 206 °C  
 4,3 g/s  
 0,0946 %  
 17 mg/Nm<sup>3</sup>  
 203 kg



## BEF FEEL 6 C



BImSchV  
Stufe 2

15a  
B - VG

ČSN EN  
13229

eco  
design



3 - 6 kW   
 84 %   
 180 mm   
 250 mm   
 435 x 220 mm   
 624 x 250 x 400 mm

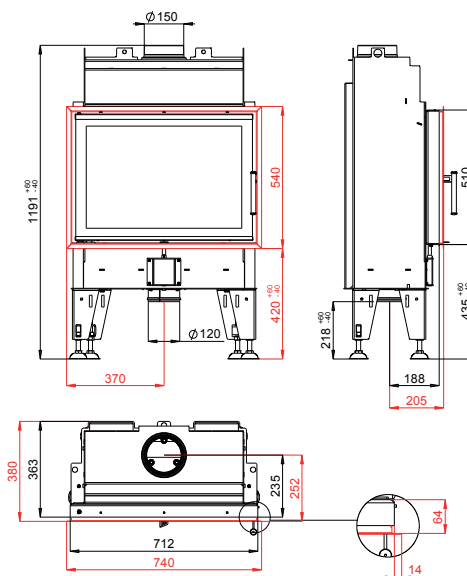
12 Pa   
 1,53 kg/h   
 206 °C   
 4,3 g/s   
 0,0946 %   
 17 mg/Nm<sup>3</sup>   
 115 kg

# BEF FEEL 7

BlmSchV  
Stufe 2

15a  
B-VG

ČSN EN  
13229

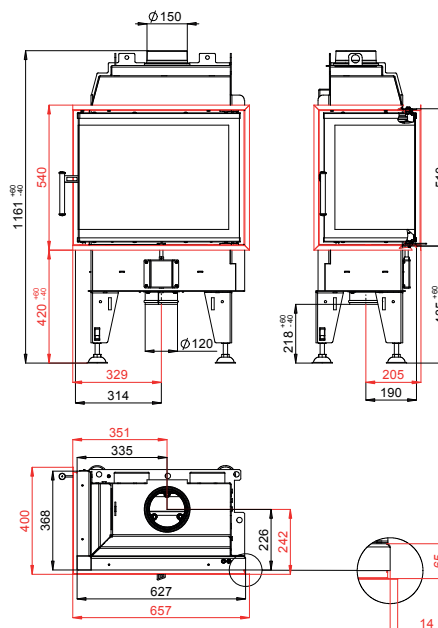


# BEF FEEL 7 CL/CP

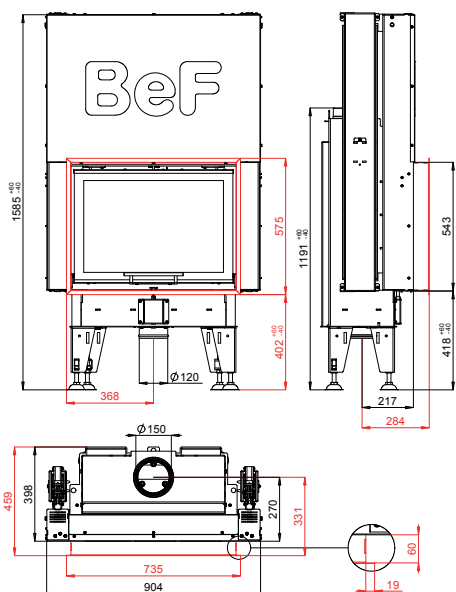
BlmSchV  
Stufe 2

15a  
B-VG

ČSN EN  
13229



# BEF FEEL V 7



BImSchV  
Stufe 2

15a  
B - VG

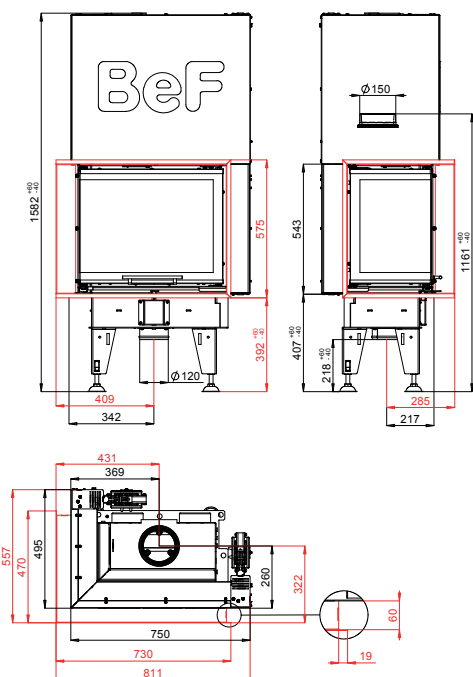
ČSN EN  
13229



- 4 - 7 kW
- 82 %
- 150 mm
- 400 mm
- 520 x 220 mm
- 1x  
670 x 468 mm

- 12 Pa
- 2,47 kg/h
- 232 °C
- 6,5 g/s
- 0,0811 %
- 18 mg/Nm<sup>3</sup>
- 1x  
214 kg

# BEF FEEL V 7 CL/CP



BImSchV  
Stufe 2

15a  
B - VG

ČSN EN  
13229



- 4 - 7 kW
- 82 %
- 150 mm
- 330 mm
- 465 x 215 mm
- 1x  
600 x 340 x 468 mm

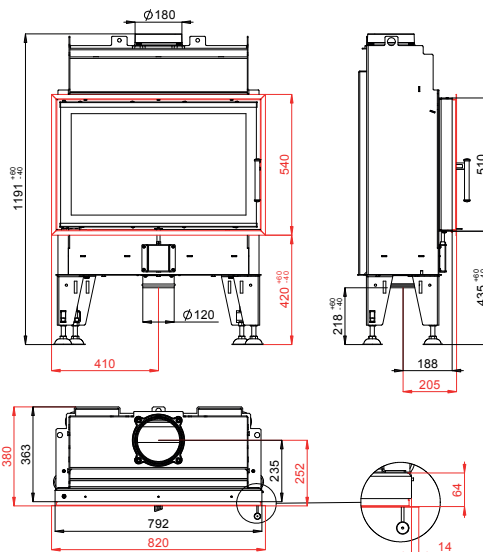
- 12 Pa
- 2,47 kg/h
- 232 °C
- 6,5 g/s
- 0,0811 %
- 18 mg/Nm<sup>3</sup>
- 1x  
213 kg

# BEF FEEL 8

BImSchV  
Stufe 2

15a  
B - VG

ČSN EN  
13229

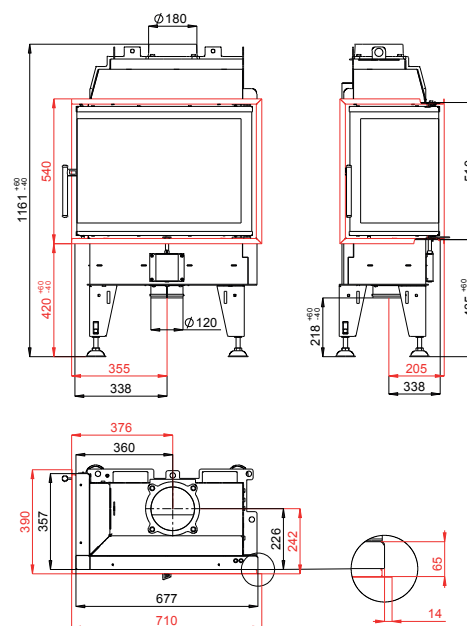


# BEF FEEL 8 CL/CP

BImSchV  
Stufe 2

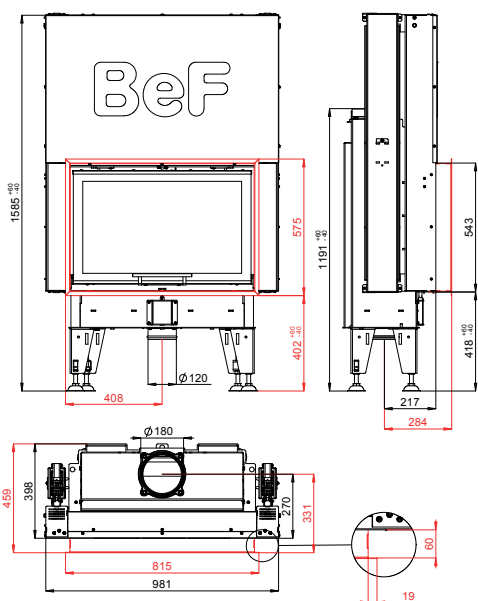
15a  
B - VG

ČSN EN  
13229





# BEF FEEL V 8



BImSchV  
Stufe 2

15a  
B - VG

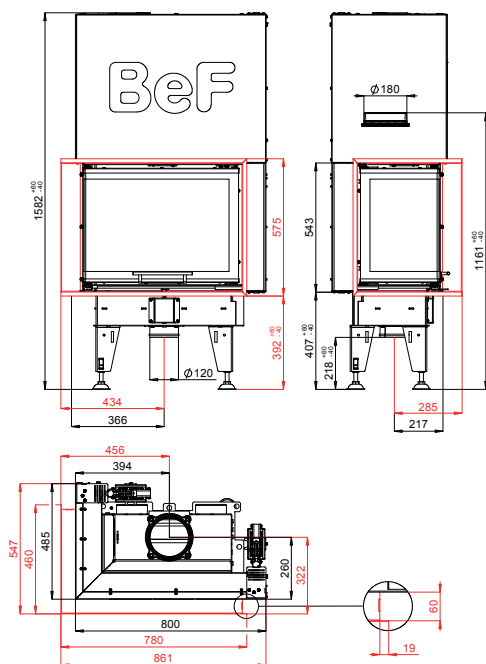
ČSN EN  
13229



- 5 - 8 kW
- 85 %
- 180 mm
- 500 mm
- 600 x 220 mm
- 750 x 468 mm

- 12 Pa
- 2,54 kg/h
- 212 °C
- 6 g/s
- 0,0932 %
- 16 mg/Nm<sup>3</sup>
- 231 kg

# BEF FEEL V 8 CL/CP



BImSchV  
Stufe 2

15a  
B - VG

ČSN EN  
13229



- 5 - 8 kW
- 85 %
- 180 mm
- 400 mm
- 515 x 215 mm
- 650 x 330 x 468 mm

- 12 Pa
- 2,54 kg/h
- 212 °C
- 6 g/s
- 0,0932 %
- 16 mg/Nm<sup>3</sup>
- 215 kg

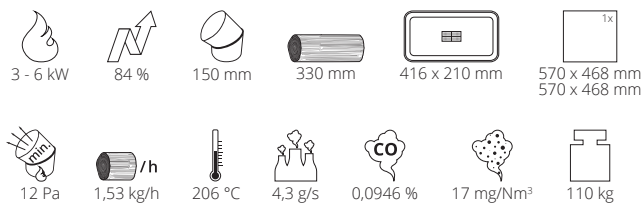
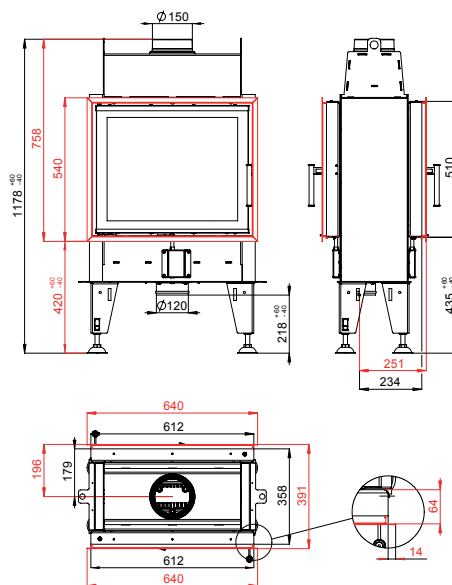


# BEF DOUBLE 6 FEEL

BlmSchV  
Stufe 2

15a  
B - VG

ČSN EN  
13229

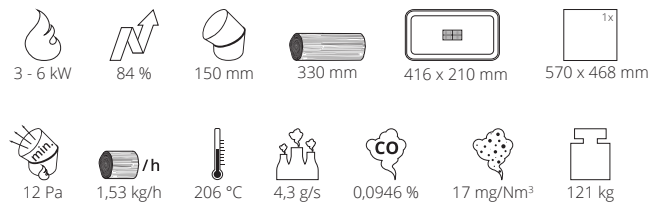
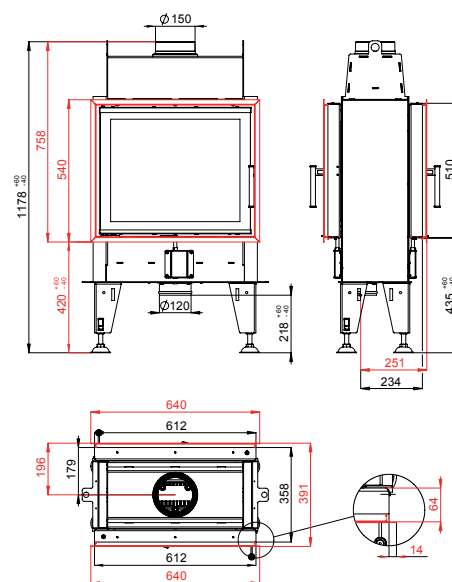


# BEF DOUBLE 6 N FEEL

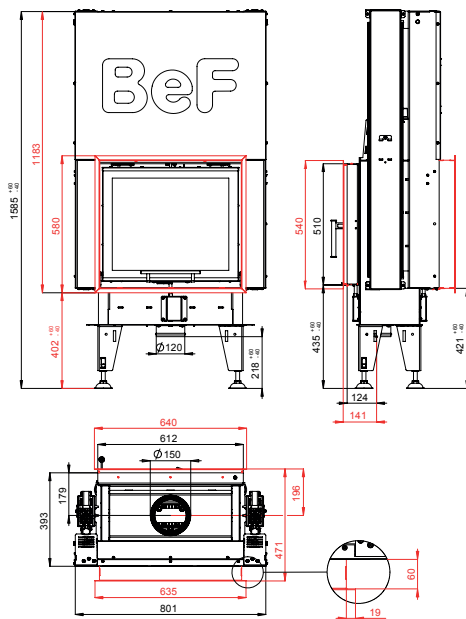
BlmSchV  
Stufe 2

15a  
B - VG

ČSN EN  
13229



# BEF DOUBLE V 6 FEEL



BlmSchV  
Stufe 2

15a  
B - VG

ČSN EN  
13229

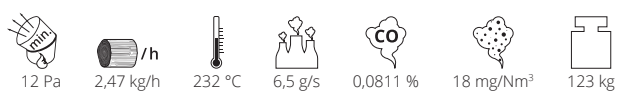
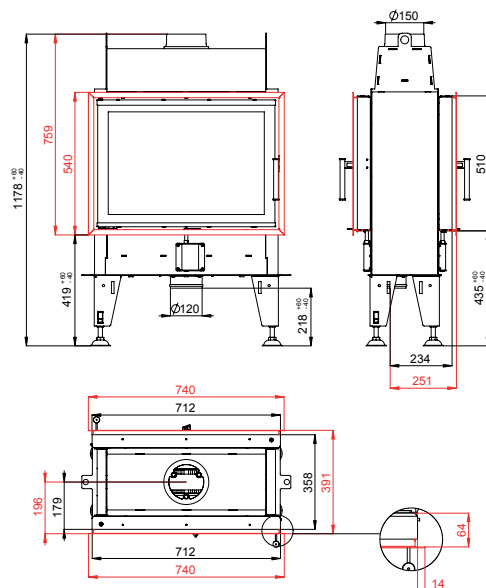


# BEF DOUBLE 7 FEEL

BlmSchV  
Stufe 2

15a  
B - VG

ČSN EN  
13229

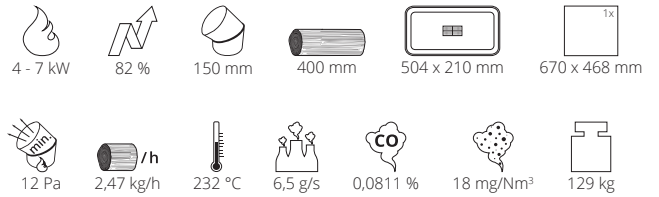
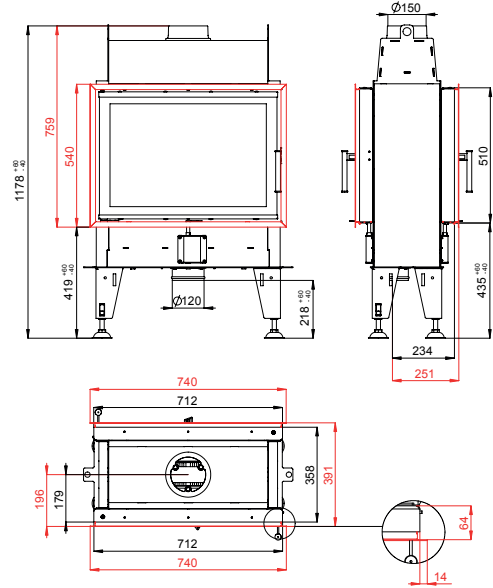


# BEF DOUBLE 7 N FEEL

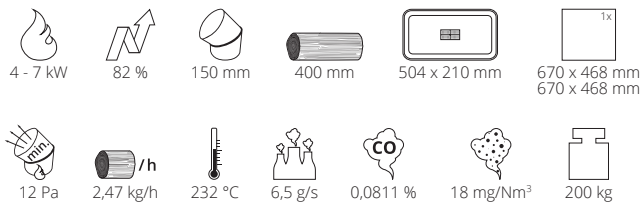
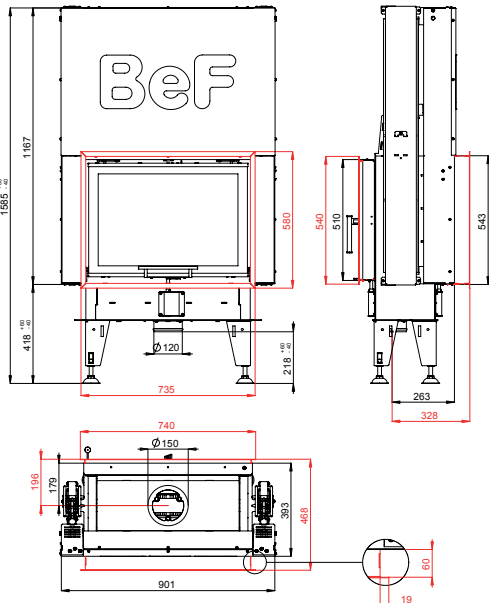
BlmSchV  
Stufe 2

15a  
B - VG

ČSN EN  
13229



# BEF DOUBLE V 7 FEEL



BlmSchV  
Stufe 2

15a  
B - VG

ČSN EN  
13229

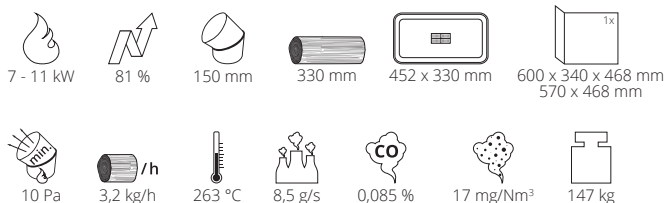
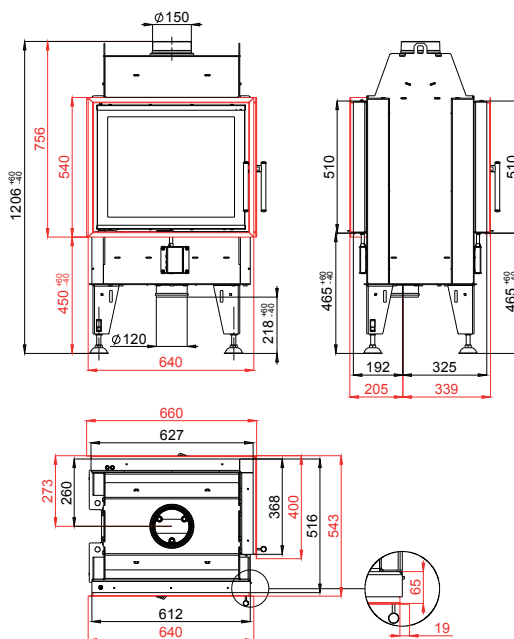


# BEF TWIN 7 CL/CP

BlmSchV  
Stufe 2

15a  
B-VG

ČSN EN  
13229

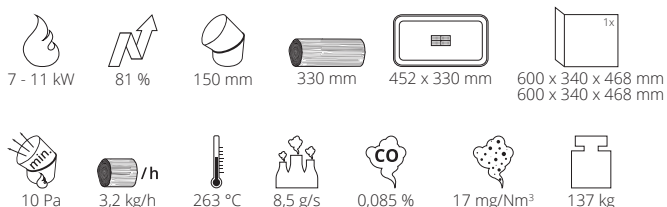
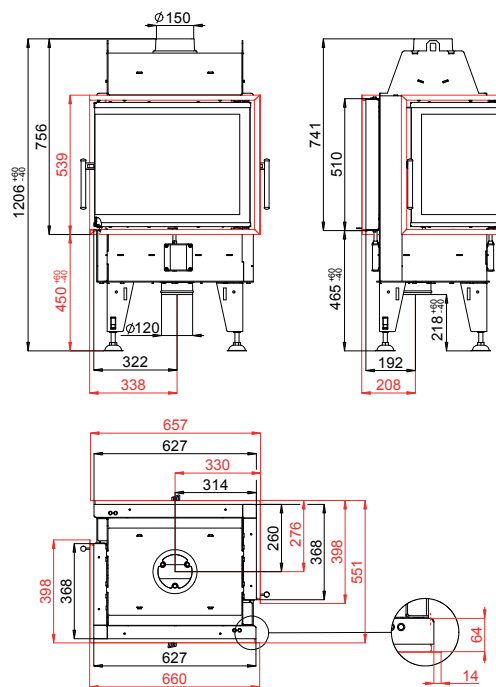


# BEF TWIN 7 CL-CL/CP-CP

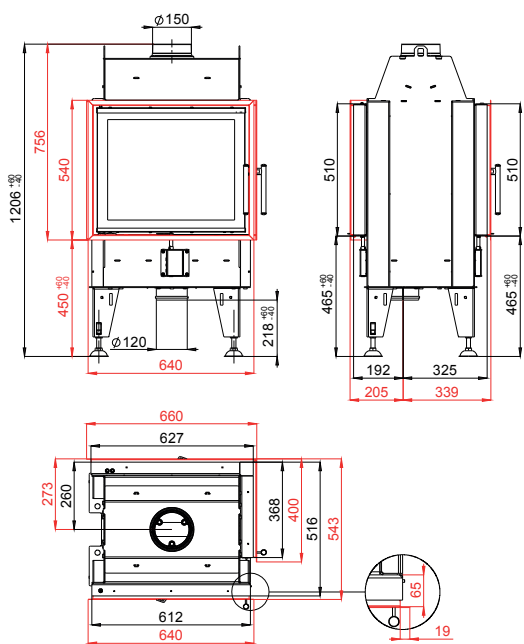
BlmSchV  
Stufe 2

15a  
B-VG

ČSN EN  
13229



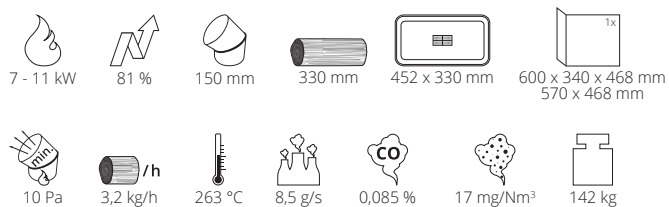
# BEF TWIN 7 N CL/CP



BImSchV  
Stufe 2

15a  
B - VG

ČSN EN  
13229

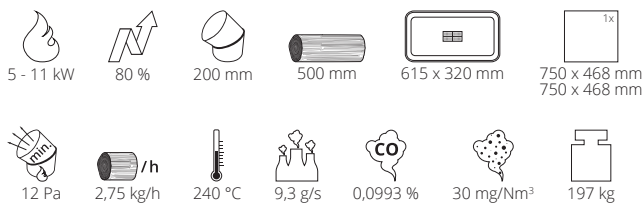
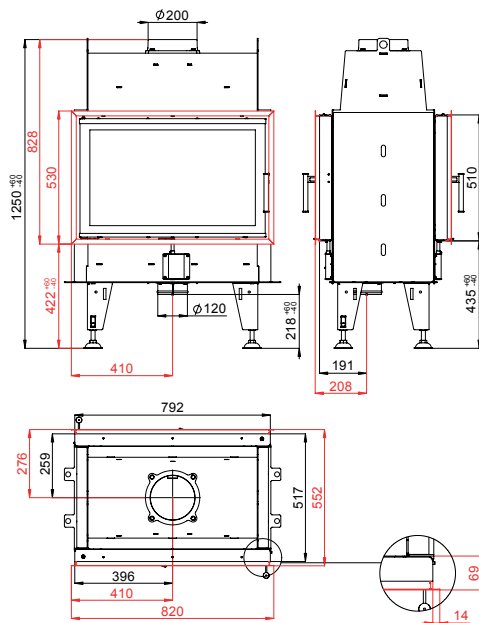


# BEF TWIN 8 II.

BImSchV  
Stufe 2

15a  
B-VG

ČSN EN  
13229

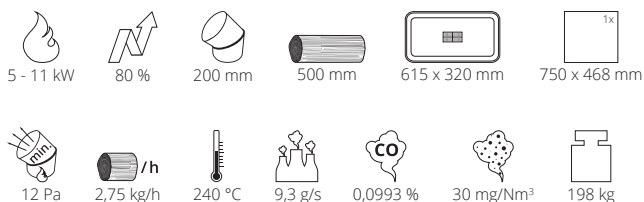
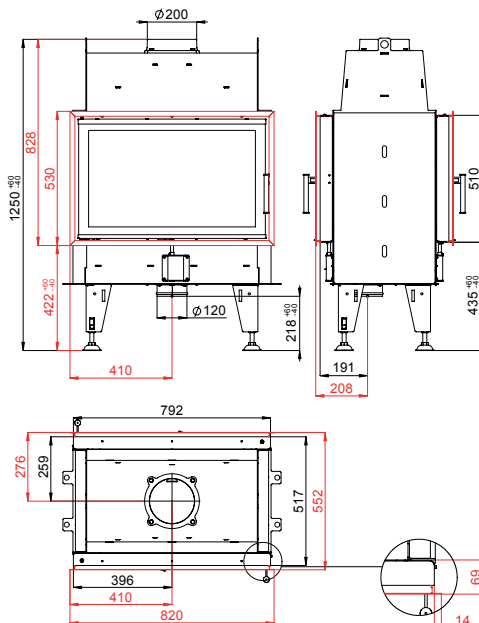


# BEF TWIN 8 N II.

BImSchV  
Stufe 2

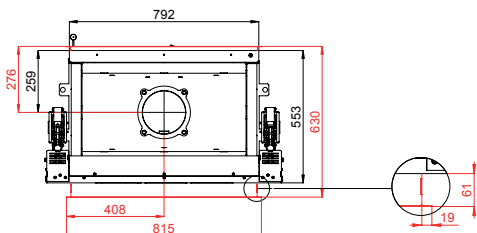
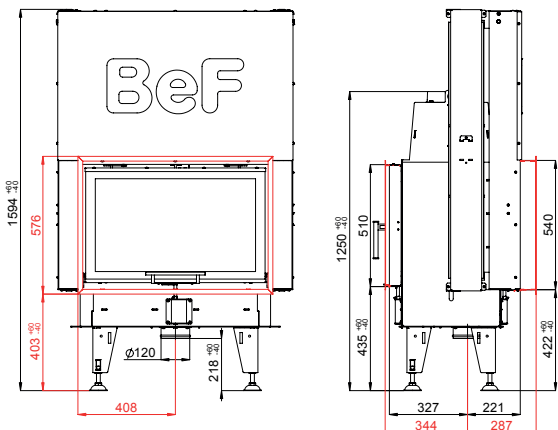
15a  
B-VG

ČSN EN  
13229





# BEF TWIN V 8 II.



BlmSchV  
Stufe 2

15a  
B - VG

ČSN EN  
13229

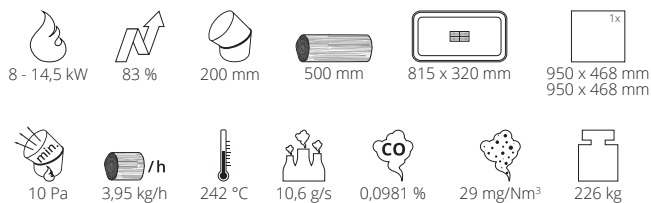
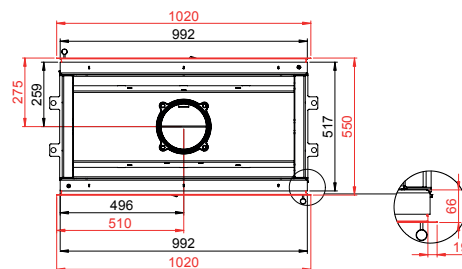
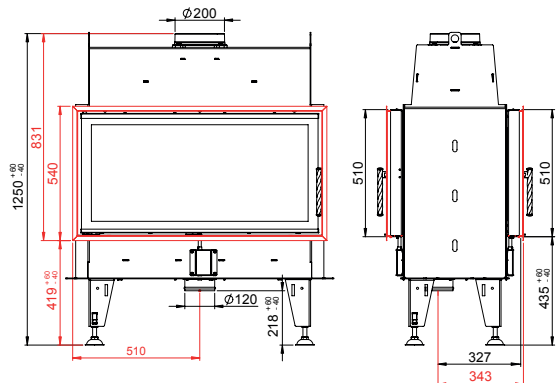


# BEF TWIN 10 II.

BImSchV  
Stufe 2

15a  
B-VG

ČSN EN  
13229

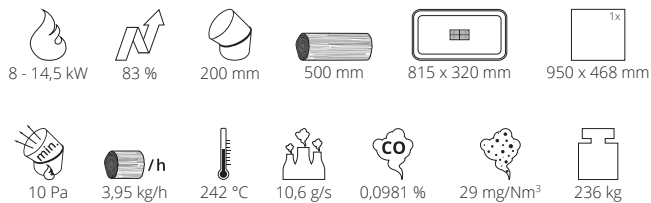
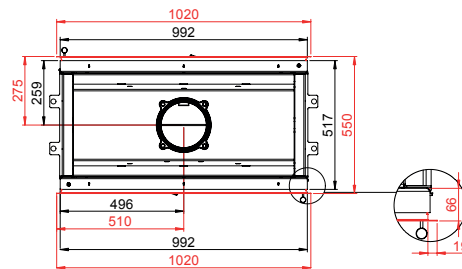
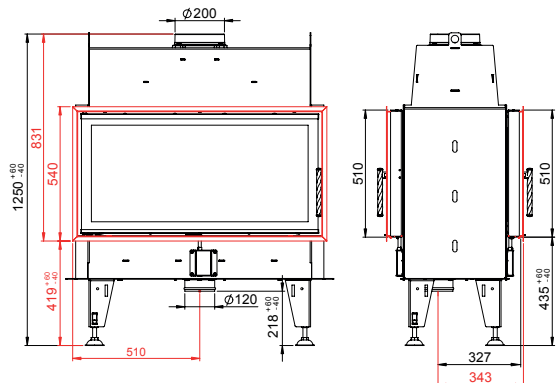


# BEF TWIN 10 N II.

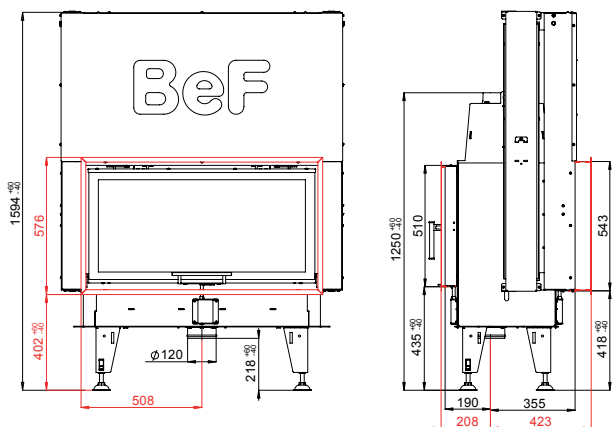
BImSchV  
Stufe 2

15a  
B-VG

ČSN EN  
13229



# BEF TWIN V 10 II.



BImSchV  
Stufe 2

15a  
B - VG

ČSN EN  
13229

eco  
design

- 8 - 14,5 kW
- 83 %
- 200 mm
- 500 mm
- 815 x 320 mm
- 950 x 468 mm  
950 x 468 mm
- 10 Pa
- 3,95 kg/h
- 242 °C
- 10,6 g/s
- 0,0981 %
- 29 mg/Nm<sup>3</sup>
- 307 kg



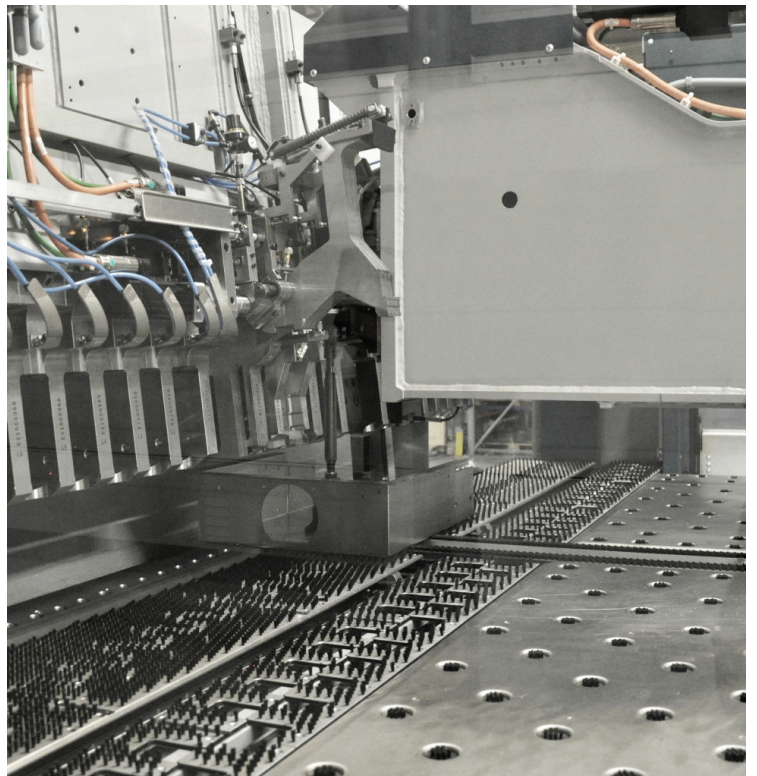




BEF RUSTICAL

16:9





\* These data are informative, the manufacturer reserves the right to change.

Your dealer:



Kotvrdovice 277, 679 07 Kotvrdovice, Czech republic  
tel.: +420 516 428 240  
e-mail: info@bef.cz  
[www.befhome.com](http://www.befhome.com)

